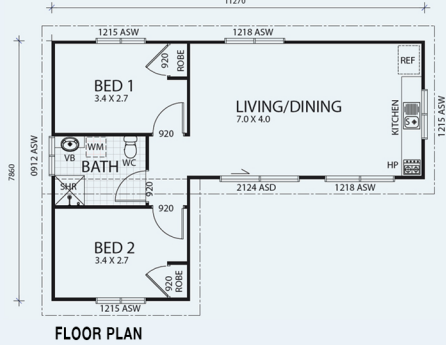




**CLUBHOUSE**

**CLUBHOUSE**

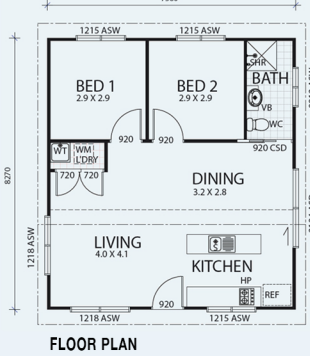


Living Space: 62.48m<sup>2</sup>  
 Total Area: 62.48m<sup>2</sup>



**OUTBACK**

**OUTBACK**

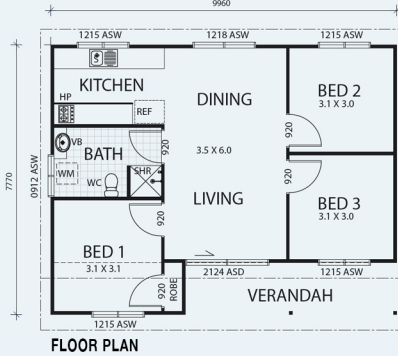


Living Space: 65.52m<sup>2</sup>  
 Total Area: 65.52m<sup>2</sup>



**ENTERTAINER**

**ENTERTAINER**

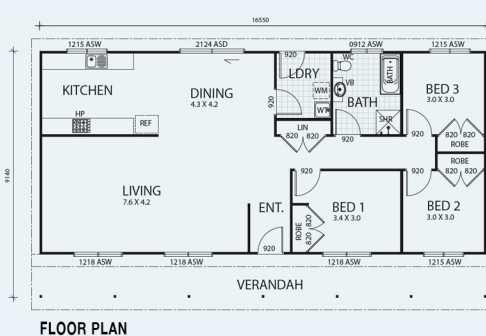


Living Space: 63m<sup>2</sup>  
 Verandah: 9m<sup>2</sup>  
 Total Area: 72m<sup>2</sup>



**RETREAT**

**RETREAT**

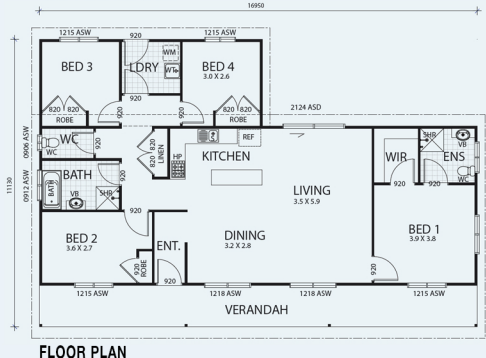


Living Space: 124.78m<sup>2</sup>  
 Verandah: 26.48m<sup>2</sup>  
 Total Area: 151.26m<sup>2</sup>



**WEEKENDER**

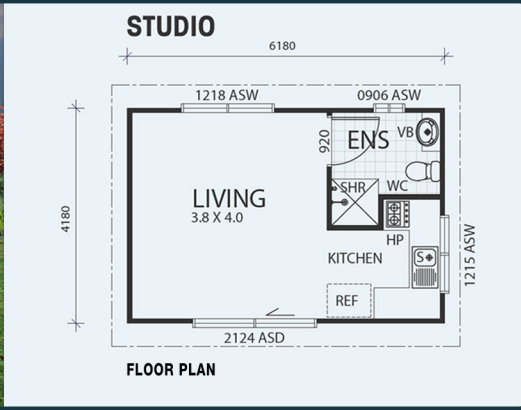
**WEEKENDER**



Living Space: 133.58m<sup>2</sup>  
 Verandah: 27.12m<sup>2</sup>  
 Total Area: 160.70m<sup>2</sup>



**STUDIO**



 x1
  x1

---

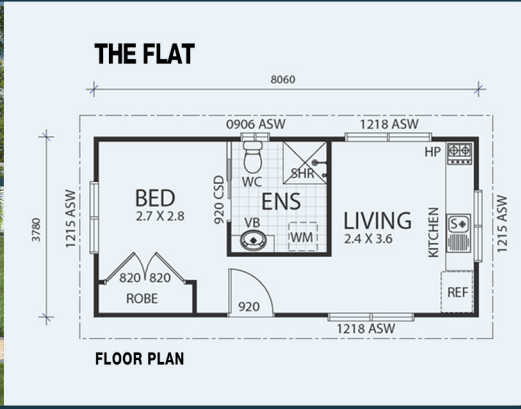
Living Space: 25.83m<sup>2</sup>

---

Total Area: 25.83m<sup>2</sup>



**THE FLAT**



 x1
  x1
  x1

---

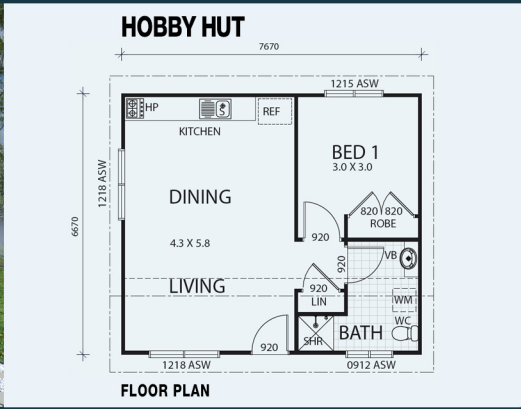
Living Space: 30.46m<sup>2</sup>

---

Total Area: 30.46m<sup>2</sup>



**HOBBY HUT**



 x1
  x1
  x1

---

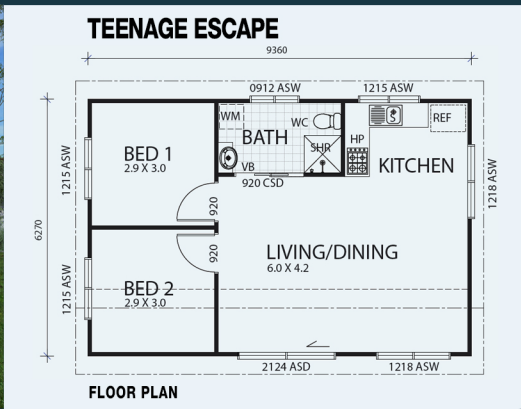
Living Space: 51.15m<sup>2</sup>

---

Total Area: 51.15m<sup>2</sup>



**TEENAGE ESCAPE**



 x2
  x1
  x1

---

Living Space: 58.68m<sup>2</sup>

---

Total Area: 58.68m<sup>2</sup>

**What Backyard Shacks Supply with your Shack**

- Complete building kit to lockup stage using 100% BlueScope materials, including frame, cladding, roofing, external doors, windows, roof & wall insulation.
- An internal Bill of Materials will be supplied listing the required components to fit out your shack. Total m2 of plasterboard, lineal meterage of skirting boards, architraves, cornice etc. will be listed, so you can cost and source the internal fit out.
- Delivery to your site.
- Full engineering plans for frames, roof, sub floor or slab for region C2 and N3 wind code areas.
- Full architectural elevations ready for submission to council.
- Indicative electrical and plumbing plans for DIY.
- Engineering plans for soil classifications A&S, M & MD.



**ENQUIRIES:**



**Better sheds. Bigger choice.**

